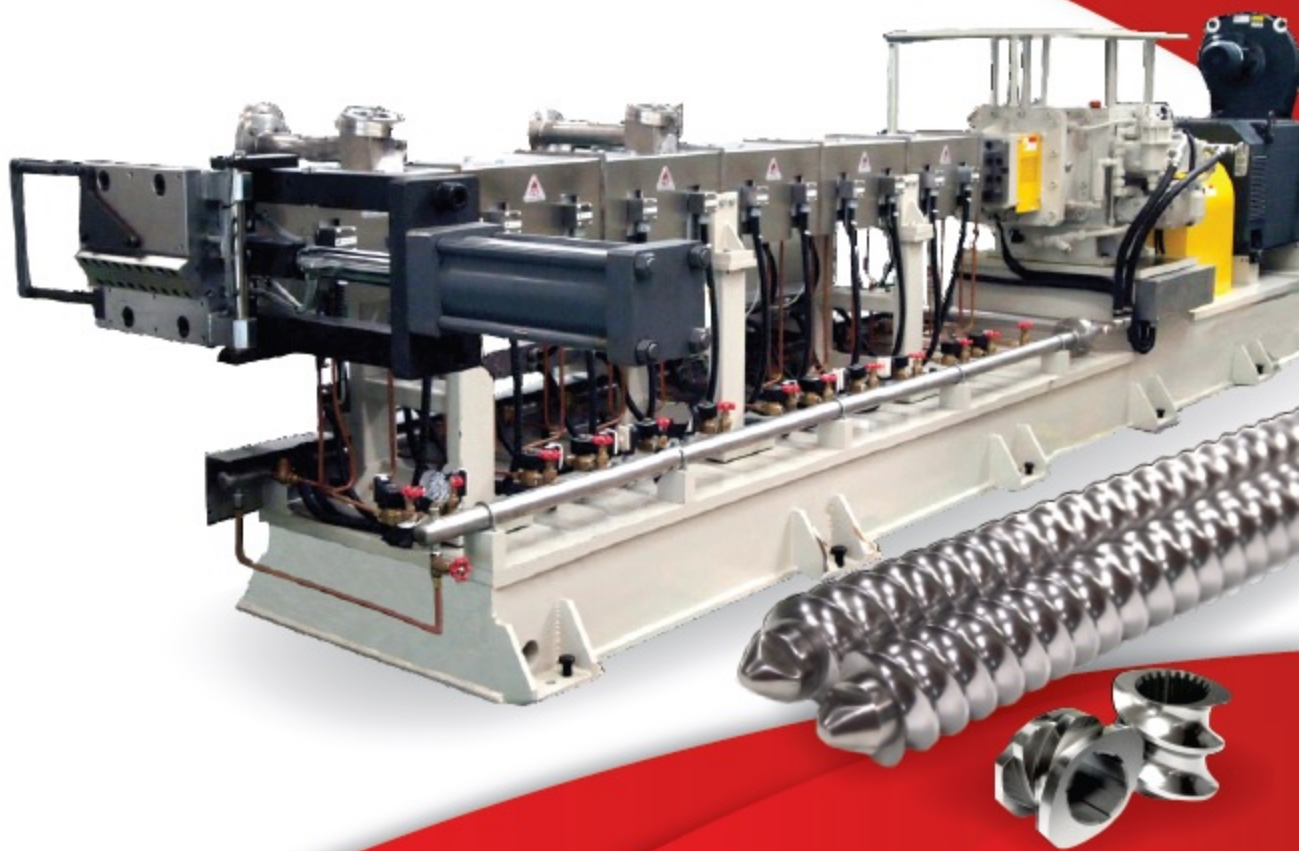


TWIN SCREW EXTRUDER COMPOUNDING & MASTERBATCH



THMCO
EXTRUDING INNOVATIONS

Gear Box

The gearbox for twin-screw extruder is handpicked by THMCO. The best fit gearbox for this state-of-the-art machine is selected from Italy designed and manufactured according to AGMA standard. This series are engineered according to modern criteria in a compact form and handles ultra high torque and high speed. This gearbox is an innovation, THMCO engineered protection systems to the gearbox by designing alarms for oil clot, over heat and over pressure. Furthermore, all of the gears and shafts are finely grinded to ensure low level of noise dB even in high-speed rotations.

THMCO are concerned about lubrication and have developed the gears of the forced type by means of a lubrication unit; in addition there is an oil cooling unit that ensures durability of the system.



Gear Box

我々 THMCO 社は、AGMA スタンドードに基づき製造された高品質なイタリア製のギアボックスを最新式 2 軸押し出し機に搭載しております。

このギアボックスシリーズは、高トルク・ハイスピードにも対応し、コンパクトに設計されております。

このギアボックスは革新的であり、アラームにより過熱や過負荷からギアボックスを守るよう設計されております。

また高回転時でも、非常に静かに駆動致します。

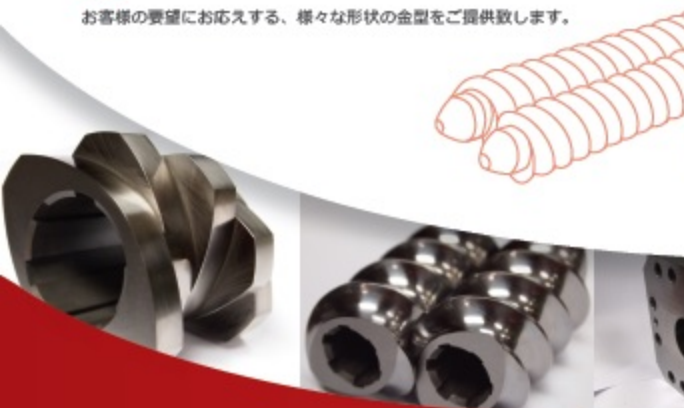
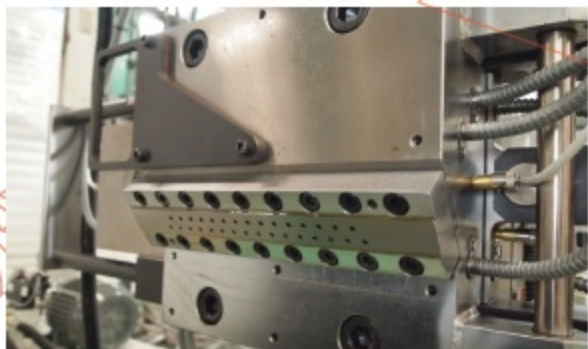
最新の潤滑システムや冷却システムを使い、長期間使用できるギアボックスのシステムをご提案致します。

Die

Twin screw extruder dies and die assemblies from THMCO are available in various configurations. Depending on your request, we may manufacture any configuration of dies for your specific order.

Die

お客様の要望にお応えする、様々な形状の金型をご提供致します。



ELEMENT : Screw & Barrel

THMCO understands the importance of how the screw and barrel affects the precision and durability of the production. Based on our expertise, we're able to design screw configurations and offers an assortment of co-rotating twin-screw extruder barrel configurations to meet virtually any processing need.

Element : Screw & Barrel

我々 THMCO 社は、スクリー・バレルが成形品の精度や耐久性にどれだけ重要な役割を果たすか十分に理解しております。我々がこれまで培ってきた経験を基に、スクリー形状のデザインや、2 軸用バレルの設計など、お客様の要望に応える体制を整えております。

Screw Elements:	Barrel Liner:
Coating: Bi-metallic materials are applied through HIP process * HIP 267, HIP 633, HIP 269	Coating: * High alloy tool steel * Ni- or Co- base hardfacing
Core: * (Low) Carbon Steel (St. 52, Ck 45) * Stainless Steel (1.4313, 1.4541)	Body: * (Low) Carbon Steel



Vacuum System

THMCO optimized the manufacturing process by utilizing a water ring pump vented twin-screw extruder to remove moisture and other volatiles from the material.

Vacuum System

ベント方式により、押し出し機中の水分を効率よく取り除きます。



Barrel Cooling Unit

THMCO barrel cooling units are engineered to circulate treated water through the extruder process section barrel assembly. This unit helps heat exchange and controls the stability of heat in every zone in the system. Our isolating design ensures that water does not back flow to other zones.

Barrel Cooling Unit

バレルクーリングユニットは、各ゾーンの熱交換や温度を安定させる為、冷却水の循環方式にて設計されております。また各自独立した設計となっている為、バックフローが発生しない設計となっております。



Torque Limiter

The torque limiter device is engineered for the twin-screw extruder to provide overload protection with Ball or Roller transmission. This German made device features several advantages:

- Alarm and sensing system for torque overload
- Protects the gearbox from jamming due to foreign matters.
- Protects motor from torque overload.

トルクリミッターは、2軸押し出し機の過負荷防止の為にドイツで設計されたものです。利点：

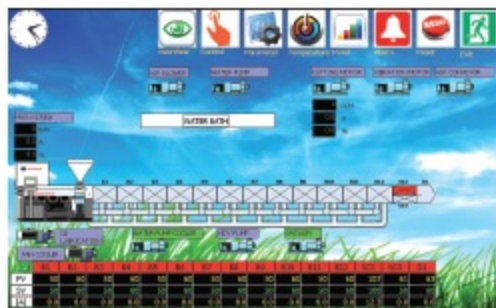
- 過負荷を感知した時に、アラームで知らせます。
- 異常発生時にギアボックスを守ります。
- トルクの過負荷からモーターを守ります。

Control System

We offer two different process controls for the twin-screw extrusion system. You may select the traditional standard monitoring system or the intelligent touch screen process control. Both systems are capable to fine tune the extrusion process, however the intelligent touch screen interface allow easy monitoring of the production.

Control System

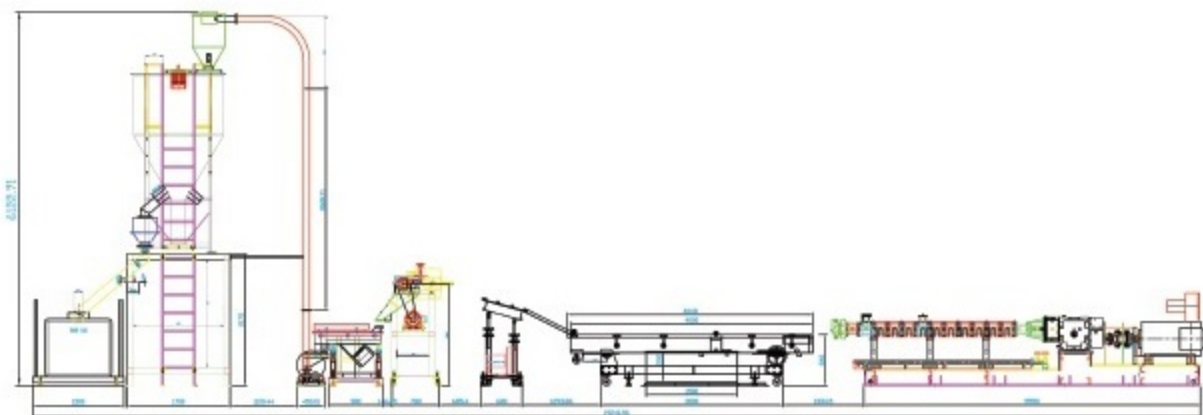
我々のコントロールシステムは、お客様のご要望により手動式・タッチパネル式のいずれも選択できます。どちらも簡単に条件設定が出来ますが、タッチパネル式の方が使い勝手がよく、より操作が簡単です。



THMCO-CORTW-HT CO-ROTATING TWIN SCREW EXTRUDERS

ITEM	HIGH SPEED TYPE					
Model	TH-CORTW-HT32	TH-CORTW-HT45	TH-CORTW-HT58	TH-CORTW-HT72	TH-CORTW-HT77	TH-CORTW-HT92
Driving Motor (Hp)	30-40	50-75	125-175	150-300	250-400	300-700
Motor Rotating Speed	1800	1750	1800	1800	1800	1800
SCREW						
Diameter (mm)	32	45	58	72	77	92
Channel Depth (mm)	5.8	6	10	13.5	13	16
L/D	32~52	34~52	36~52	34~52	36~52	34~52
Max Rotating Speed (rpm)	600	600	600	600	600	600
Torque (N/M/Shaft)	80-200	160-400	400-1000	600-1500	960-2400	2800-5600
Material	Nitride Steel					
BARREL						
L/D 40:1 Heating Zone	9	9	9	9	9	9
Heating Capacity (Kw)	1.8	3	6	7	8	9
Cooling Type	Water / Oil					
Material	Nitride Steel & Special Alloy					
Output	It depends on polymer characteristics, formulation and the display of screw elements					

Remark: The specifications are subject to change without prior notice.
本カタログの仕様及び寸法は予告なく変更することがあります。



THAI HYDRAULIC MACHINERY (1987) CO., LTD.
9/6 Moo 4, Theparak Km.11 Rd., Bangpleeysai,
Bangplee, Samutprakarn, 10540 Thailand.

Tel : +662 757 4781-3,
+662 385 5728-9
Fax: +662 385 5697
E-mail: thmco@thai-hydraulic.com
www.thai-hydraulic.com



www.thai-hydraulic.com